

Paper Reference 4MA1/1H
Pearson Edexcel
International GCSE

Mathematics A
PAPER: 1H
Higher Tier
(Calculator)

Diagram Booklet

In the boxes below, write your name, centre number and candidate number.

Surname					
Other names					
Centre Number					
Candidate Number					

INSTRUCTIONS

There may be spare copies of some diagrams in case you need them.

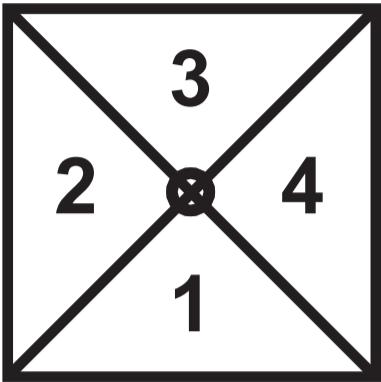
**THIS DIAGRAM BOOKLET *MUST* BE RETURNED
WITH THE QUESTION PAPER AT THE END OF THE
EXAMINATION.**

Contents

Page

4	Question 2
5	Question 4 (NOT accurately drawn)
6	Question 6(a)
7	Question 7 (NOT accurately drawn)
8	Question 12
9	Question 12 (Spare copy)
10	Question 13
11	Question 15
12	Question 18 (NOT accurately drawn)
13	Question 19 (NOT accurately drawn)
14	Question 20
15	Question 21
16	Question 22 (NOT accurately drawn)

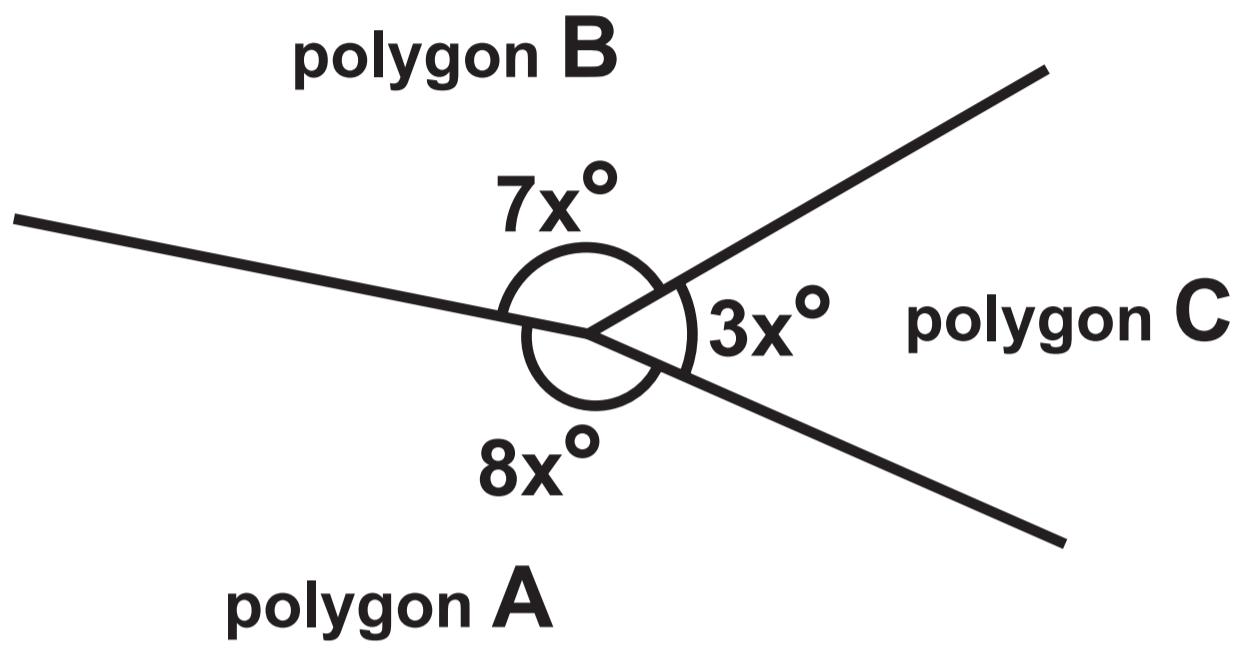
Question 2



Number	Probability
1	0.26
2	
3	0.18
4	

Question 4

Diagram NOT accurately drawn

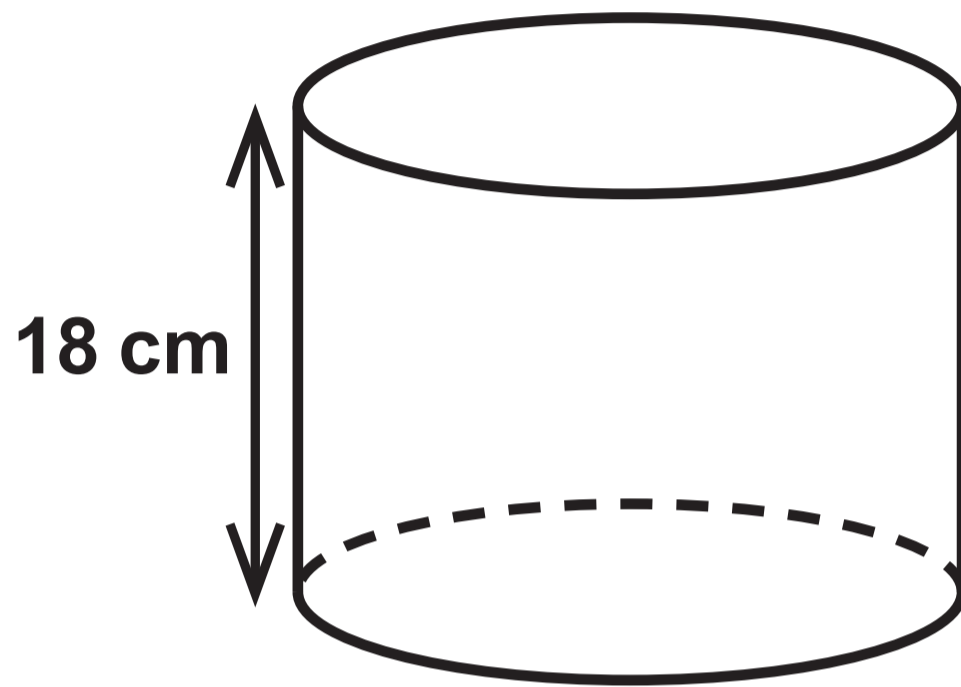


Question 6(a)

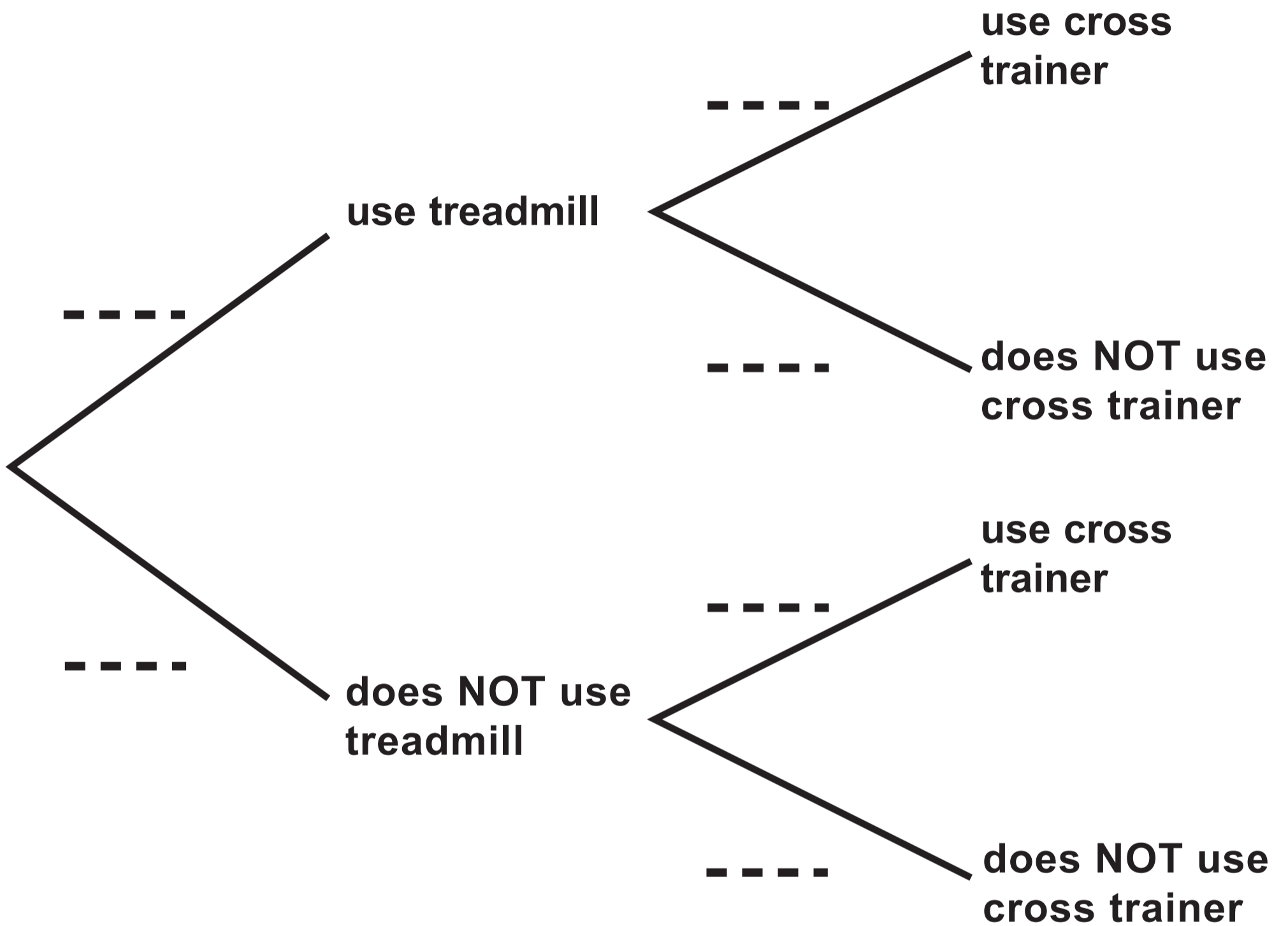
Value (x euros)	Service charge band
$x \geq 700\,000$	A
$600\,000 \leq x < 700\,000$	B
$500\,000 \leq x < 600\,000$	C
$400\,000 \leq x < 500\,000$	D
$0 < x < 400\,000$	E

Question 7

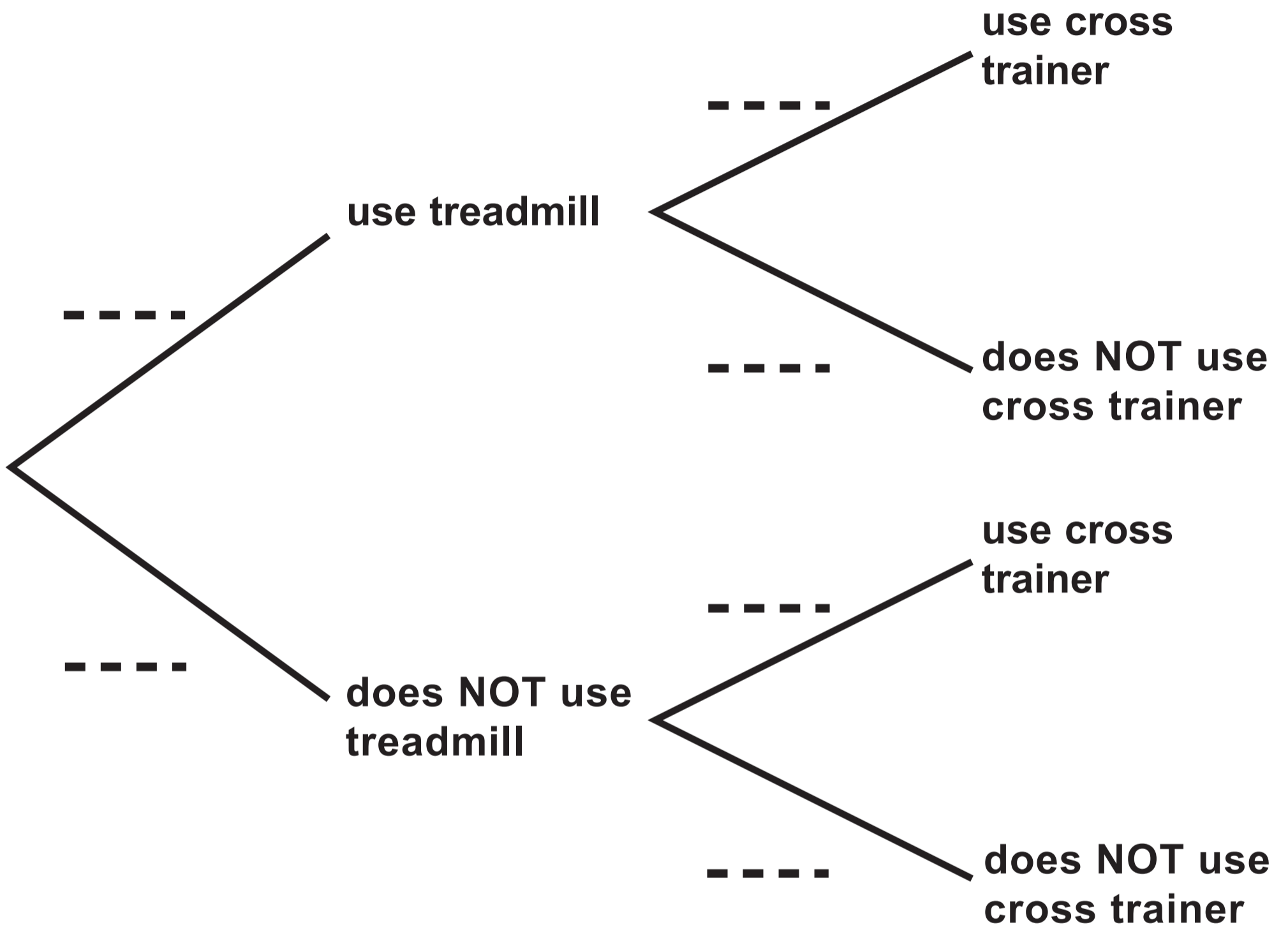
Diagram NOT accurately drawn



Question 12



Question 12



Question 13

Payment	Amount paid
Payment 1	$\frac{3}{8}$ of the total cost
Payment 2	45% of the total cost
Payment 3	\$406

Question 15

For any game that Abraham plays

the probability that he wins the game is 0.3

the probability that he draws the game is 0.5

the probability that he loses the game is 0.2

When Abraham wins a game, he scores $+10$ points.

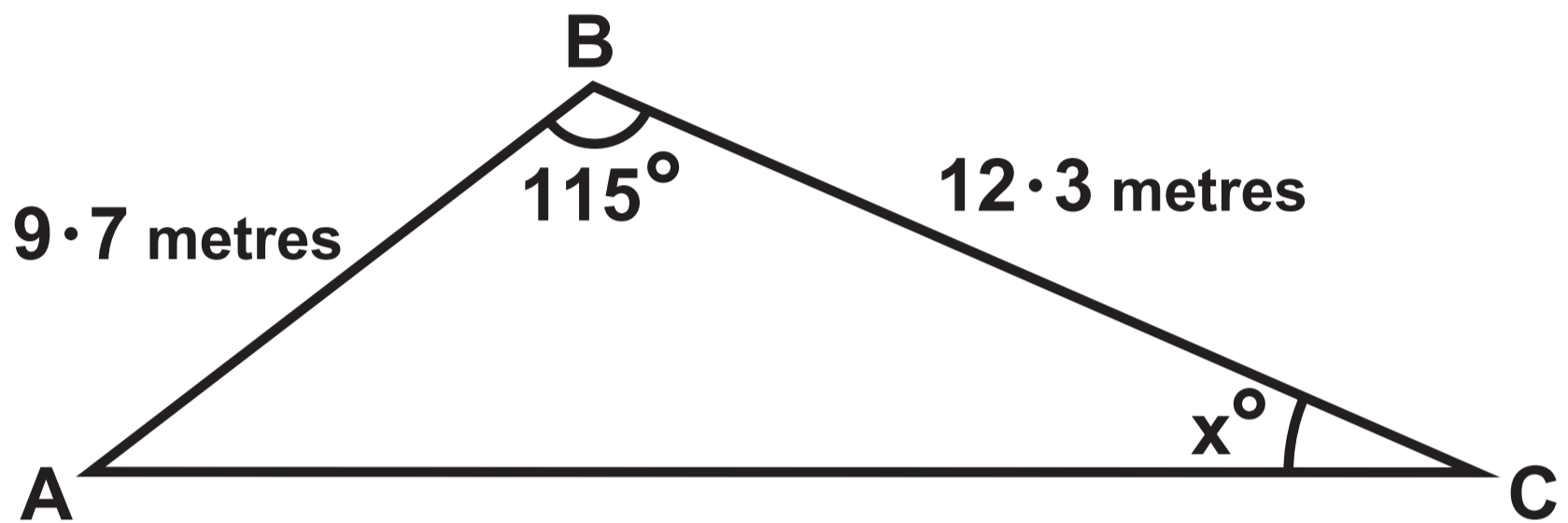
When Abraham draws a game, he scores 0 points.

When Abraham loses a game, he scores -5 points.

Abraham plays 3 games and the points he scores in each of the 3 games are added together to get his total score.

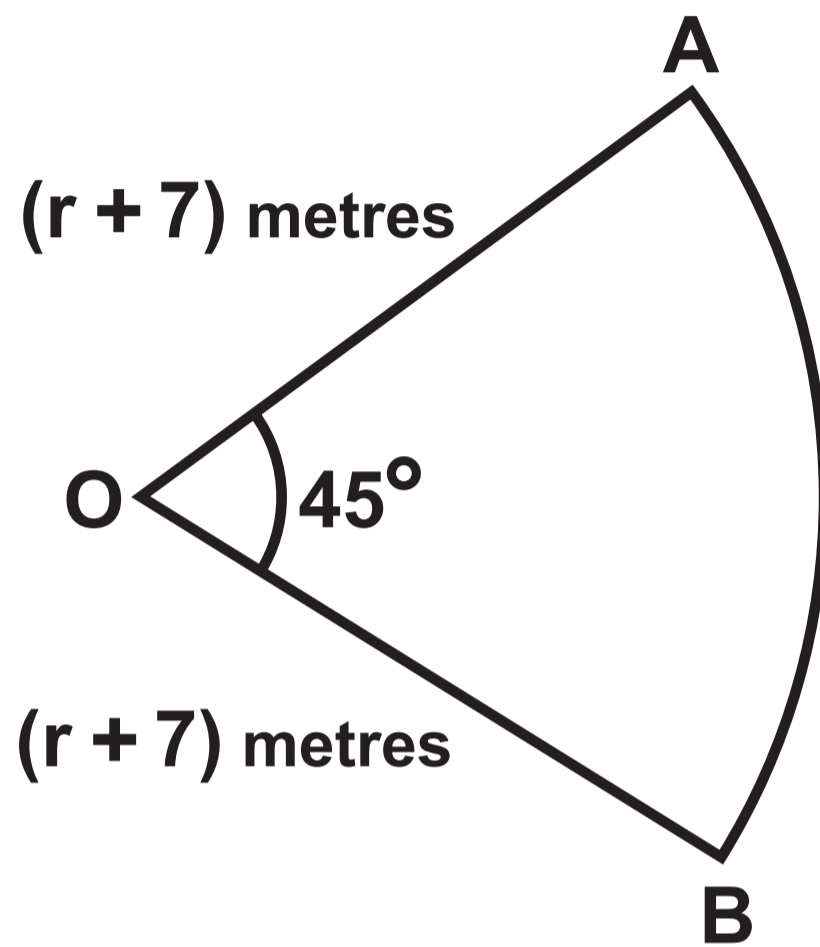
Question 18

Diagram NOT accurately drawn

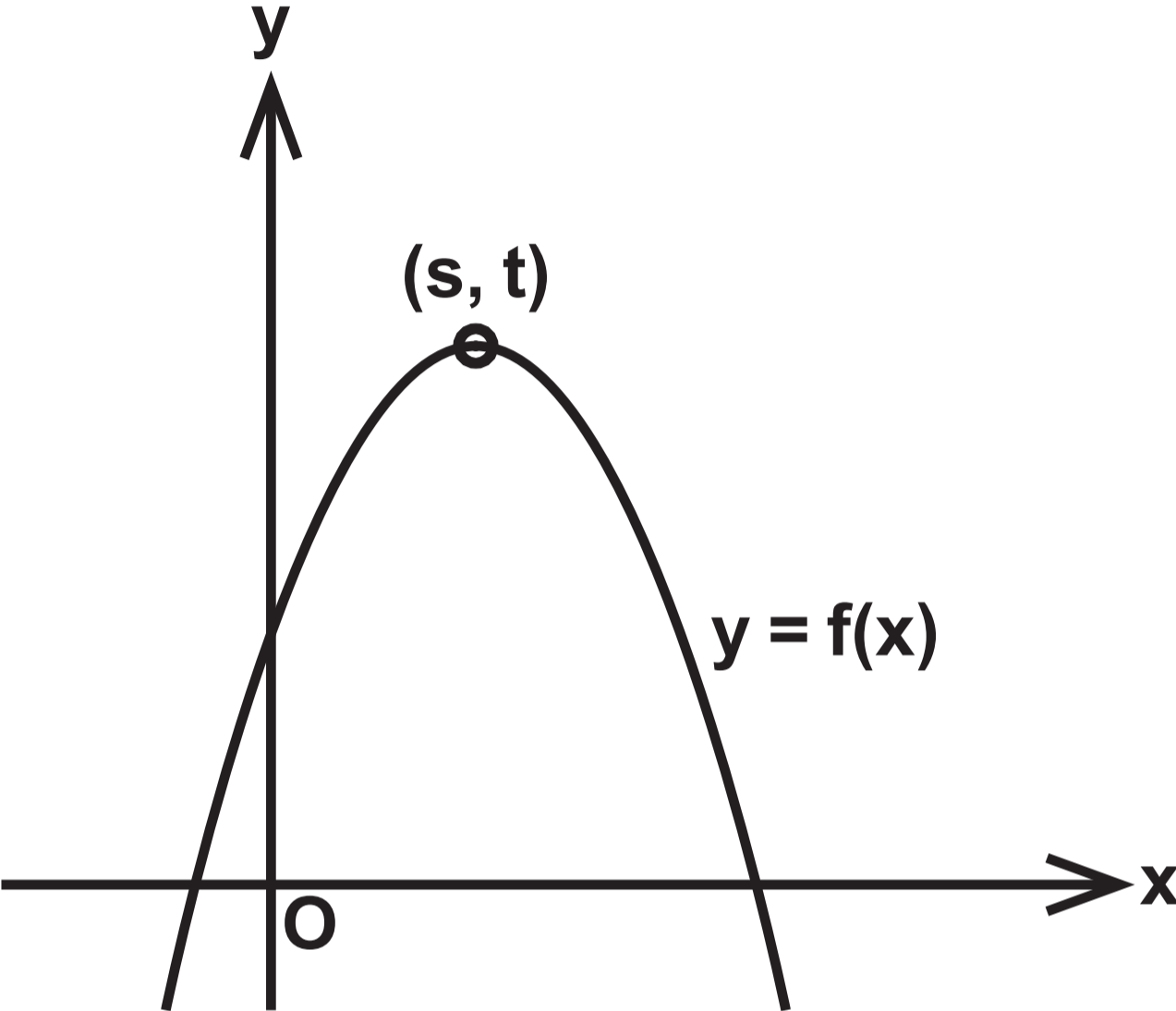


Question 19

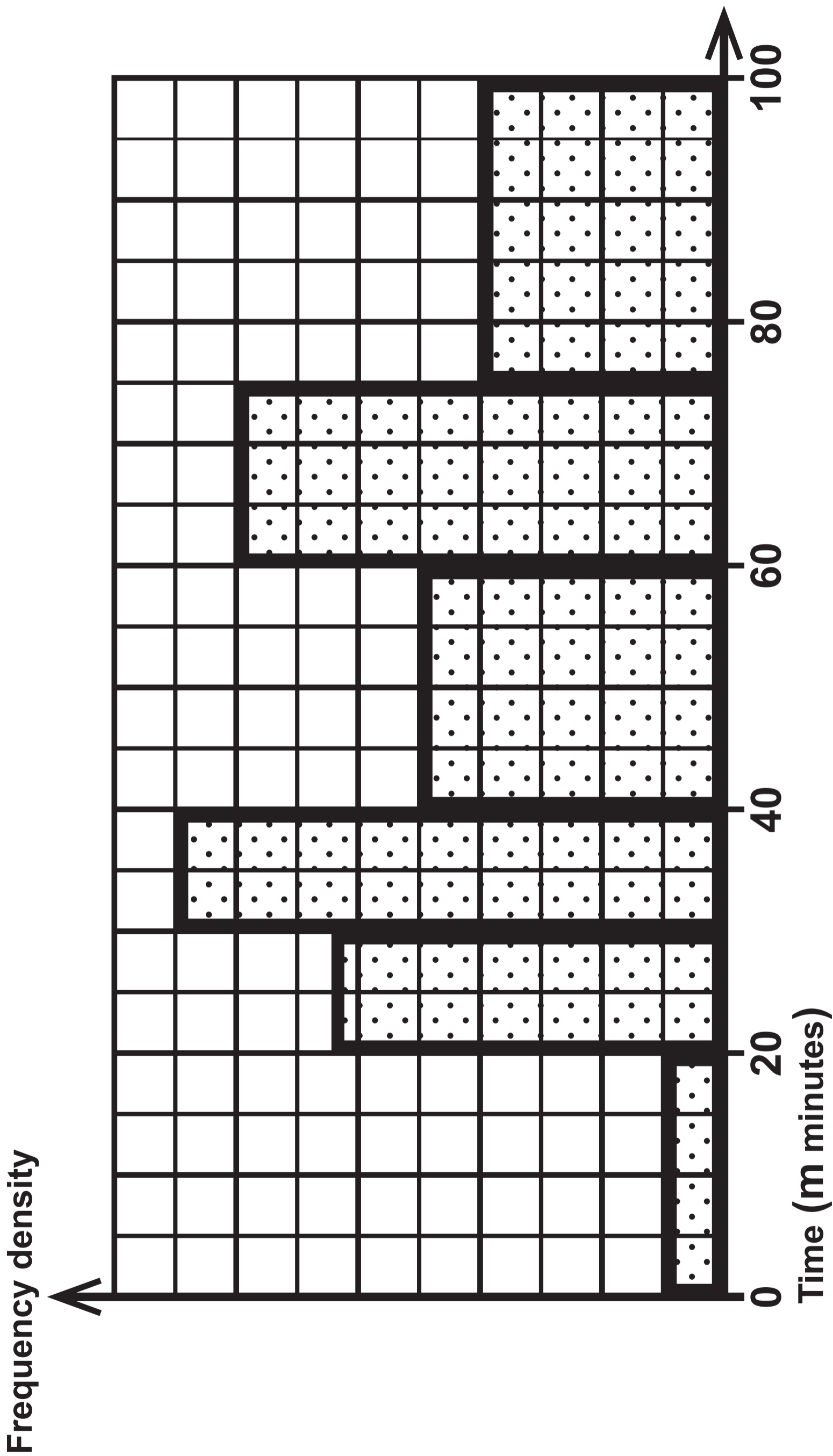
Diagram NOT accurately drawn



Question 20



Question 21



Question 22

Diagrams NOT accurately drawn

Diagram 1

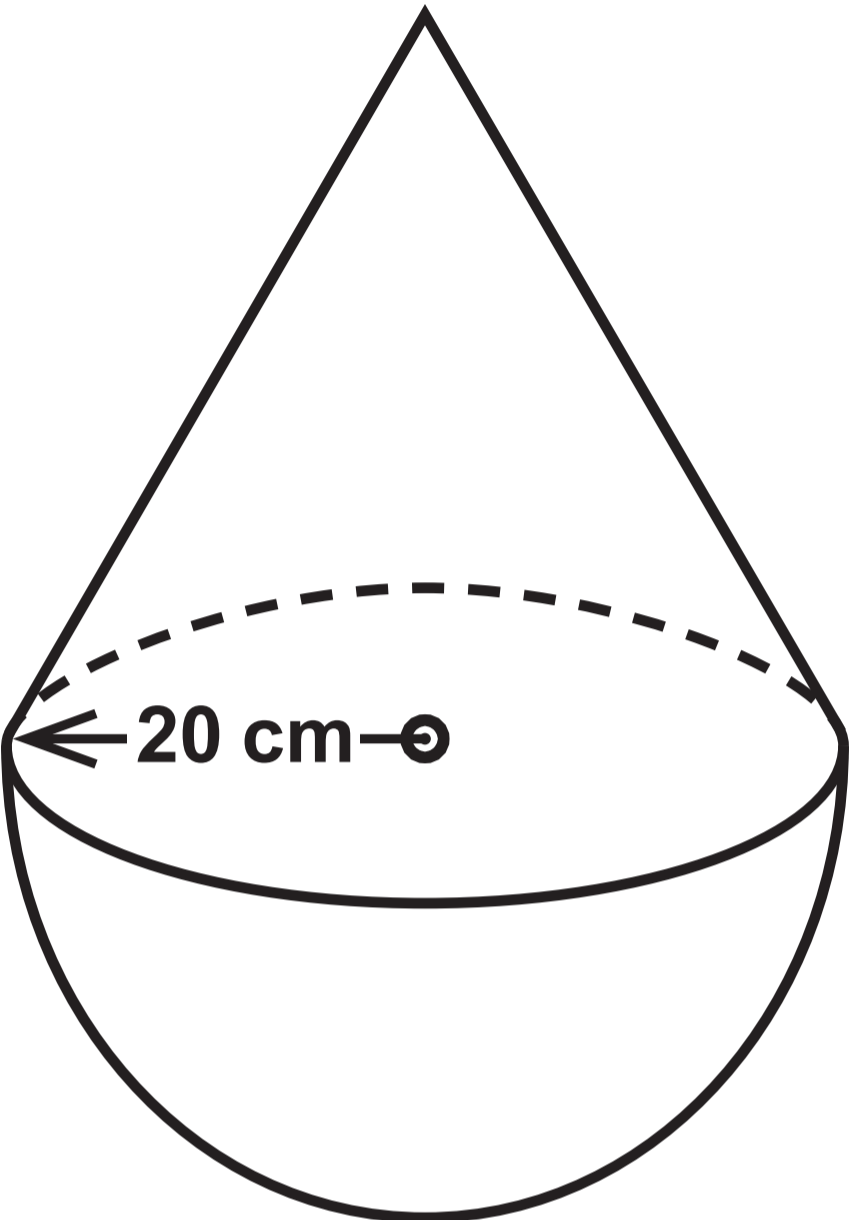


Diagram 2

